
STATUTORY INSTRUMENTS

2016 No. 1019

HIGHWAYS, ENGLAND

The County Council of Somerset (River Parrett
Bridge) Scheme 2015 Confirmation Instrument 2016

Made - - - - 11th October 2016

Coming into force in accordance with article 1

The Secretary of State for Transport, makes this Instrument in exercise of the powers conferred by section 106(3) of the Highways Act 1980⁽¹⁾, and now vested in the Secretary of State⁽²⁾:

1. This Instrument may be cited as “The County Council of Somerset (River Parrett Bridge) Scheme 2015 Confirmation Instrument 2016” and shall come into force on the date on which notice that it has been confirmed is first published in accordance with paragraph 1 of Schedule 2 to the Highways Act 1980.

2. The County Council of Somerset (River Parrett Bridge) Scheme 2015 (“the Scheme”) is hereby confirmed with modifications.

3. The Scheme as confirmed is set out in the Schedule hereto (including the plan) and copies of the Scheme with its accompanying plan are deposited at the offices of the Department for Transport, Floor 13 (IMD), Ashdown House, St Leonards on Sea, Hastings, East Sussex, TN37 7GA and at the offices of Somerset County Council, Block B Reception, County Hall, Taunton, Somerset TA1 4DY.

Signed by authority of the Secretary of State for Transport

11th October 2016

C J Miller
A Senior Civil Servant in the Department for
Transport

(1) 1980 c.66
(2) S.I. 1981/238

SCHEDULE

Regulation 3

THE COUNTY COUNCIL OF SOMERSET (RIVER PARRETT BRIDGE) SCHEME 2015

The Council of the County of Somerset (hereinafter referred to as “the Council”) make this Scheme in exercise of their powers under Section 106(3) of the Highways Act 1980 and of all other powers enabling them in that behalf—

1. The Council are authorised to construct over the navigable waters of the River Parrett the bridge specified in the Schedule to this Scheme as part of the highway they are proposing to construct and improve between Marsh Lane/Showground Road junction and Parrett Way in the District of Sedgemoor in the County of Somerset.

2. This Scheme may be cited as The County Council of Somerset (River Parrett Bridge) Scheme 2015.

THE COMMON SEAL of

the COUNCIL OF THE COUNTY OF SOMERSET

was hereunto affixed on the 13th day of November 2015

in the presence of:-)

Authorised Signatory

SCHEDULE TO
THE SCHEME

Regulation 3

PLANS AND SPECIFICATIONS OF THE RIVER PARRETT BRIDGE

The location and general design of the Bridge are shown on the drawing numbered MJ000052-OR-006 and MJ000052-OR-007 marked ‘The County Council of Somerset (River Parrett Bridge) Scheme 2015’.

POINTS OF COMMENCEMENT AND TERMINATION

From a point on the north bank of the River Parrett in Bridgewater, 85 metres west of the Railway Bridge.

To a point on the north bank of the River Parrett in Bridgewater, 102 metres to the west of the Railway Bridge.

SPAN

Single span bridge. Span of 52 metres.

HEADWAY

Not less than 2.9 metres above an assumed water level of 6.1 metres AOD.

WATERWAY

Existing minimum clear navigable waterway to be maintained (approximately 16 metres).

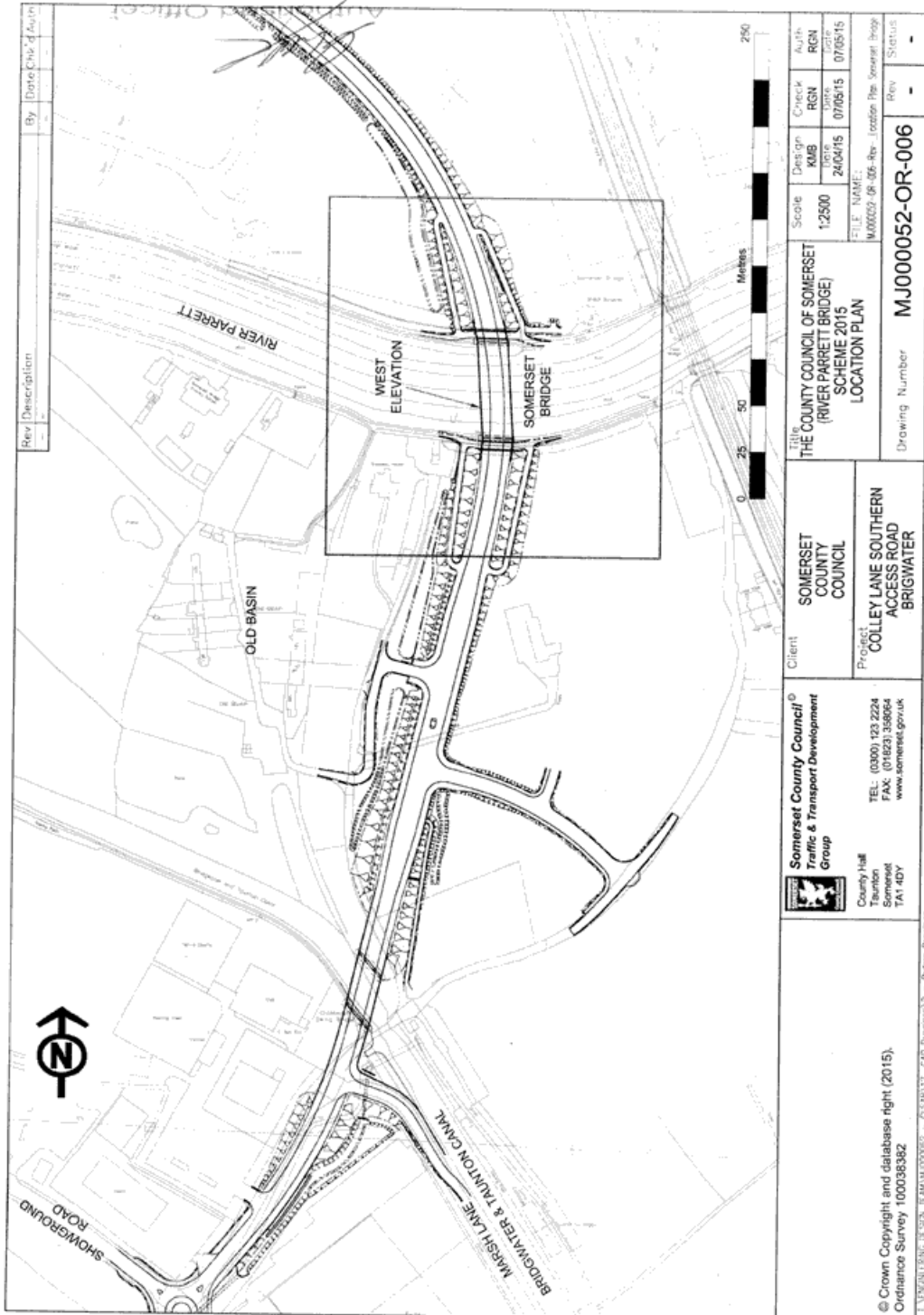
OVERALL DIMENSIONS

The Bridge will carry 2 footways/cycleways and a single two lane carriageway.

The bridge will be 16.7 metres wide overall and will carry a 7.3 metres wide carriageway with variable width footway/cycleway (minimum 3.5 metre wide) on the both sides of the carriageway.

The vehicle incursion protection/parapets and edge beams make up the remainder of the bridge width.

Status: This is the original version (as it was originally made). This item of legislation is currently only available in its original format.



Status: This is the original version (as it was originally made). This item of legislation is currently only available in its original format.

EXPLANATORY NOTE

(This note is not part of the Instrument)

This instrument confirms a scheme to construct over the navigable waters of the River Parrett the bridge specified in the Schedule to this Scheme as part of the highway they are proposing to construct and improve between Marsh Lane/Showground Road junction and Parrett Way in the District of Sedgemoor in the County of Somerset.

The Secretary of State has modified this Scheme as follows:

(1) A North Pointer has been included on drawing number MJ000052-OR-006 and annotated as a modification to the map.

(2) In the Schedule to the Scheme, under the Points of Commencement and Termination the point of commencement has changed from 'From a point on the north bank of the River Parrett in Bridgwater, 100 metres west of the Railway Bridge' to 'From a point on the north bank of the River Parrett in Bridgwater, 85 metres west of the Railway Bridge'.

(3) In the Schedule to the Scheme, under the Points of Commencement and Termination the point of termination has changed from 'To a point on the south bank of the River Parrett in Bridgwater, 100 metres west of the Railway Bridge' to 'To a point on the south bank of the River Parrett in Bridgwater, 102 metres west of the Railway Bridge'.